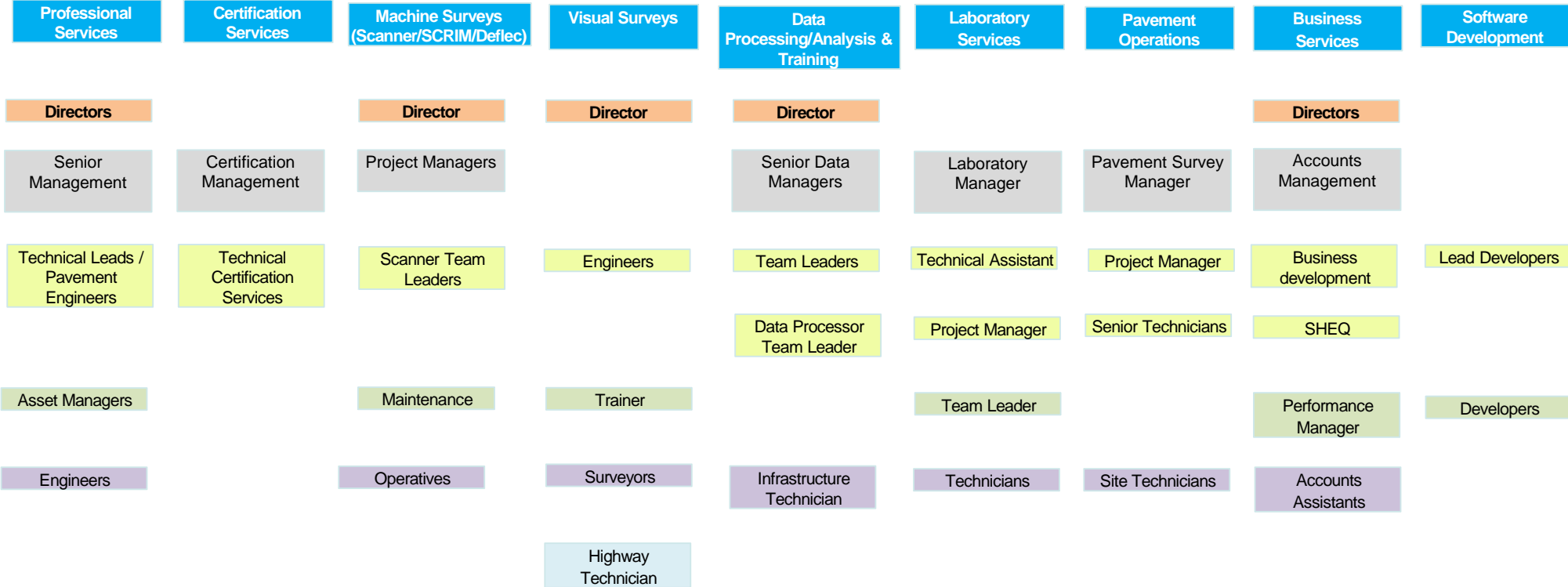


XAIS-PTS Company Structure

Business Directors



Work Area Divisions



I hereby certify that the information provided in this chart is complete and a true reflection of XAIS-PTS Limited organisation and divisional operation areas. Certification services operate its certification management system in line with EN17021 activities for road construction products. Each work area is operated as a department and no personnel, nor any consultancy services are shared or provided within the work areas.

Richard Edwards
Managing Director

Version: 19.06.24